

FARM EQUIPMENT

Timed Online
2485 Glenburn Road,
Glenburn, ND 58740



Built on Trust.

AUCTION

OPENS: Thursday, August 6

CLOSES: THURSDAY, AUGUST 13 | 10AM ²⁰²⁰

PREVIEW: Thursday, August 6 - Thursday, August 13 | **LOADOUT:** Thursday, August 13 - Friday, August 21

TRACTORS

2010 Buhler 575, 4WD, deluxe cab, buddy seat, leather, powershift, 6 hyd., large pump, return flow, power beyond, integrated auto steer, FM-750 display, power mirrors, diff lock, HID lights, weight pkg., front suitcase weights, Michelin 650/65R42 factory triples, 4,029 hrs., S/N701639

1995 John Deere 8300, MFWD, deluxe cab, powershift, 4 hyd., 3 pt., quick hitch, 1000 PTO, diff lock, front suitcase weights, front duals, 18.4-42 press steel duals, shows 4,468 hrs., S/NP001680

HARVEST EQUIPMENT

2009 Case-IH 8120, axial flow, Field Tracker, deluxe controls, power reverser, rock trap, chopper, Pro 600 display w/integrated auto steer, factory hopper ext., long auger ext., wide spread spreader, power mirrors, both sets concaves, 20.8-42 straddle duals, 540/65R30 rear tires, 2,086 sep. hrs., 3,007 engine hrs., S/NY9G207189

2012 Capello chopping corn head, 8x30", Contour sensors, Insight header control, hyd. auger end, mounts for Case-IH, S/N08951

2009 Case-IH MacDon 2162 flex draper, 35', fore/aft, single drive, flipover reel, hyd. cross auger, slow speed transport, Case-IH mounts, S/N192555

GRAIN CART

2002 Brent Avalanche 1084 grain cart, 1,000 bu., roll tarp, 1000 PTO, 520/85R38 walking tandem duals, S/NB20-100-128

AIR SEEDERS

2012 Seedmaster 70-12 air seeder, 70', 12" spacing, hyd. swing hitch, hyd. down pressure, NH3 Super Cooler, Paralink knife openers, double shoot, full run monitor, tandems across, approx. 20,000 acres, S/N12752, single owner

Flexi-Coil 5000 air seeder, 57', 7-1/2" space, full run monitor, solid packer wheels, full floating hitch, Flexi-Coil tow-behind 3-compartment commodity cart, 380 bu., mechanical drive, hyd. fill auger, single shoot & double shoot, 800/65R32 rear tires, cart S/NU085956, seeder S/NU084476

TILLAGE EQUIPMENT

2010 Gates Magnum coulter disc, 40', tandem duals, hyd. angle adj., 2-bar harrow

2012 Gates heavy duty harrow, 70', 9/16" teeth, hyd. down pressure, adj. pitch carbide teeth, S/N99172

Bourgault 9200 chisel plow, 42', full floating hitch, tandems across, 3-bar harrow, Valmar 2055 granular applicator

SEMI TRACTOR

2005 Kenworth W900, Aerocab conventional, ISX Cummins, 475 hp., 13 spd., engine brake, air ride susp., air slide 5th, dual stainless air cleaners & exhaust, twin aluminum fuel tanks, 260" WB, 3:55 rears, Cat's Eye tire pressure system, 11-24.5 virgin tires, 95% tread, all aluminum rims, 782,064 miles

TRAILERS

2012 Tipte tandem axle hopper bottom, 40'x102"x78", ag hopper, air ride, roll tarp, double row lights, electric traps, stainless steel corners, 11-24.5 tires on aluminum wheels

2001 Tipte tri-axle hopper bottom, 51'x96"x72" standard hopper, tri-axle lift capable, air ride, electric roll tarp, double row lights, SS rear, Cat's Eye tire pressure system, 11-24.5 virgin tires, 95% tread, all aluminum rims

2008 Sure Pull tandem axle gooseneck flatbed trailer, 32', flat flip ramps, tandem duals

2014 DCT tandem axle bumper hitch heavy duty car trailer, 21', tilt bed

PICKUPS

2008 Ford F450 XL Super Duty, crew cab, Powerstroke diesel, automatic, 4WD, 8' steel bed, 300 gal. fuel tank, 12v pump, retractable hose, John Deere AC2 Welderator compressor, torch set, toolbox, shows 132,934 miles, New engine in 2018, New transmission & transfer case

2008 Ford F450 Super Duty Lariat, crew cab, diesel, 4WD, long box, leather, grill guard, 246,854 miles, bad engine

HOPPER BINS & AERATION

(2) **Meridian 5,000 bu. hopper bins**, w/vents & sight glasses, on skids, w/7.5 hp. air fans

(2) **Meridian 4,000 bu. hopper bins**, w/vents & sight glasses, on skids, w/7.5 hp. air fans

Meridian 4,000 bu. hopper bin, epoxy-lined, on skids, w/7.5 hp. air fan

GRAIN HANDLING EQUIPMENT

2015 Harvest International 1392 auger, 92'x13", mechanical low pro hopper, hopper walker, 540 PTO, electric winch

2010 Wheatheart auger, 81'x10", mechanical low pro hopper, 540 PTO

2015 Westfield TFX loadout auger, 41'x10" truck unloader, Kohler electric start motor, self-propelled

2013 Sakundiak loadout auger, 39'x8", 5 hp., 1 phase

Batco PS2500 drive over tube conveyor, full hyd. & drive

2013 DeKoning hyd. swing conveyor, 15" tube, w/transport

Bin conveyor, 50' belt, 7.5 hp., 1 phase

SNOWBLOWERS

2016 Red Devil 23509 snowblower, 109", hyd. chute & tip, 3 pt., 540 PTO

Farm King 960SB snowblower, 96", 3 pt., 540 PTO, S/N8041079

OTHER EQUIPMENT

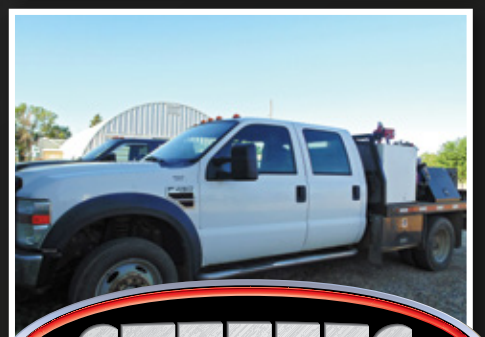
2011 HyGrade pull-type hyd. angle tilt blade, 14', concrete weight

2011 John Deere HX20 pull-type mower, 20', hyd. fold, double blades, safety chain, rear susp., aircraft tires, 1000 PTO

New Holland H6750 hyd. rotary disc mower, 9', 3 pt., S/NYFN146280

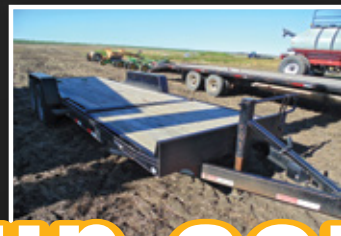
Willmar tandem axle fertilizer spreader, dual spinner, roll tarp, 540 PTO, flotation tires

2015 fuel tank, 1,000 gal., Fill-Rite 35 gpm electric pump



MITCH & JOAN PRESKEY
701.720.0752

or Brad Olstad at Steffes Group,
701.237.9173 or 701.238.0240



SteffesGroup.com

Steffes Group, Inc., 2000 Main Avenue East, West Fargo, ND 58078 | 701.237.9173



TERMS: All items sold as is where is. Payment of cash or check must be made sale day before removal of items. Statements made auction day take precedence over all advertising. \$35 documentation fee applies to all titled vehicles. Titles will be mailed. Canadian buyers need a bank letter of credit to facilitate border transfer. Scott Steffes ND81, Bob Steffes ND82, Brad Olstad ND319, Max Steffes ND999, Justin Ruth ND2019